

PRECOR™

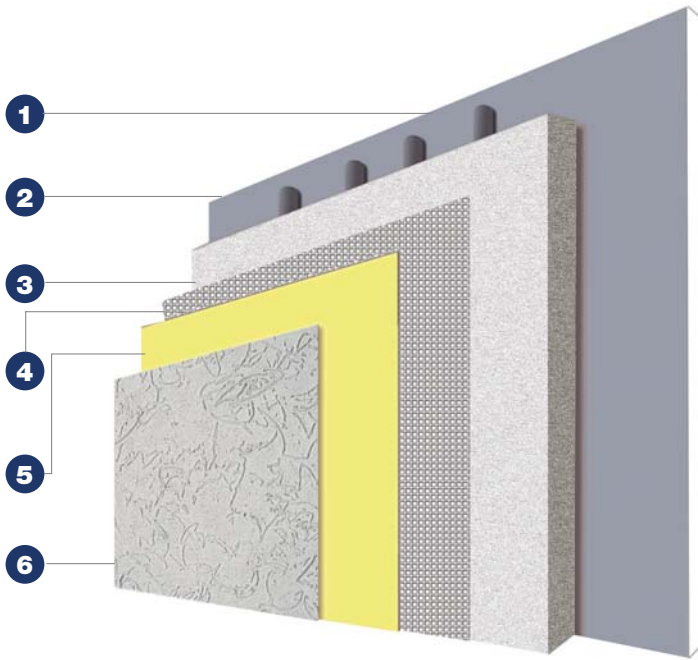
Exterior Insulation and Finish System



11620 Brittmoore Park Drive
Houston, TX 77041
Phone: 713 . 937 . 3437
Fax: 713 . 937 . 9765
www.corev.com

i m p r e s s i v e s u r r o u n d i n g s





1. Approved substrate.
2. UNIBASE Adhesive, an acrylic polymer cement modifier mixed at the jobsite with Portland cement, is used to adhere the EPS to approved substrates.
3. EPS Insulation Board is a high grade expanded polystyrene providing thermal protection and design flexibility.
4. Corevnet Reinforcing Meshes provide impact resistance, flexibility and overall strength to the system.
5. UNIBASE Basecoat Mixture is an acrylic polymer cement modifier mixed at the jobsite with Portland cement, in which COREVNET Reinforcing Meshes are embedded to create the basecoat lamina.
6. Corev Textured Finish Coatings are premixed acrylic finish coatings available in 40 standard and limitless custom colors. They are durable, colorfast and easy to maintain.

PRECOR™

Exterior Insulation and Finish System

The Benefits

PRECOR, a classic PB system well suited to new construction and retrofit, has been installed on many thousands of projects during Corev America's more than twenty years of manufacturing experience. Advantages include:

Exterior thermal protection: PRECOR offers much higher R-value than typical stucco or masonry systems, and unlike batting insulation, provides protection to the entire thermal mass of the building.

Architectural design flexibility: With the wide range of available finish coat textures and limitless colors, and through use of special insulation board shapes such as crown moldings, bullnoses, dentils and a host of others, PRECOR renders unique architectural concepts possible at an affordable price.

Durability, colorfastness and ease of maintenance: Corev's finish coatings are integral color and based on acrylic resins and silica sands. They are extremely abrasion resistant, vapor permeable, and unlike cementitious finishes, will not discolor over time. The film forming acrylic surface allows easy cleaning through low pressure power washing.

2:1 Ratio UNIBASE basecoat mixture leads the industry: Each of the components of PRECOR contributes importantly to the constitution of an extremely lightweight system that offers flexibility unparalleled by masonry and most other cladding systems. The quality of the basecoat lamina is vital to the performance of the system. UNIBASE basecoat mixture is mixed with Portland cement in a ratio of approximately 2:1, in contrast to the EIFS industry standard of 1:1, resulting in unmatched flexibility and performance.

Corev America is Texas based and was founded in 1982 to manufacture and market technologically advanced architectural coatings, adhesives, sealants, paints and exterior wall insulation systems. With international operating experience, Corev America draws from a wealth of knowledge in construction materials technology, environmental conditions and applications science. Corev America is committed to making high-performance, aesthetically pleasing and durable products from only the very best quality components.

See long-form specifications, testing summaries, MSDS sheets and product data sheets for complete information on the PRECOR System. This document conveys system, product and installation information related to the PRECOR system and applicable as of the date of this document. Corev America assumes no liability, expressed or implied, for workmanship.

